



60W (1/12.5 HP)

INDUCTION MOTORS Frame size 90mm sq. (3.54 in.sq.)

LEAD WIRE TYPE

SPECIFICATIONS

CONTINUOUS DUTY, INSULATION CLASS A or E, 4POLES

Model	Output		Voltage (V)	Frequency (Hz)	Rated						Starting Torque			Capacitor (μF)
	(HP)	(W)			Input (W)	Current (A)	Torque			Speed (rpm)	(kg-cm)	(N-m)	(oz-in)	
							(kg-cm)	(N-m)	(oz-in)					
L9160□C	1/12.5	60	1∅100	50 60	130 130	1.25 1.25	4.5 3.7	0.441 0.363	62.49 51.38	1300 1600	3 3	0.294 0.294	41.66 41.66	15
L9160□D	1/12.5	60	1∅200	50 60	130 130	0.57 0.67	4.5 3.7	0.441 0.363	62.49 51.38	1300 1600	3.9 3.9	0.382 0.382	54.16 54.16	4.5
L9160□B	1/12.5	60	1∅220	60	140	0.7	3.7	0.363	51.38	1600	3.5	0.343	48.60	4
L9160□E	1/12.5	60	1∅115	60	130	1.20	3.8	0.372	52.77	1550	3	0.294	41.66	12
L9160□X	1/12.5	60	1∅220~240	50	140	0.63	4.5	0.441	62.49	1300	4.2	0.412	58.33	4
L9160□U	1/12.5	60	3∅200	50 60	135 135	0.46 0.42	4.5 3.8	0.441 0.372	62.49 52.77	1300 1550	10.4 7.5	1.019 0.735	144.42 104.15	-
L9160□T	1/12.5	60	3∅200~230	50 60	135 135	0.5 0.46	4.4 3.7	0.431 0.363	61.10 51.38	1350 1600	13.5 9.7	1.323 0.951	187.47 134.70	-
L9160□S	1/12.5	60	3∅380~415	50 60	135 135	0.29 0.27	4.4 3.7	0.431 0.363	61.10 51.38	1350 1600	13.5 9.7	1.323 0.951	187.47 134.70	-
L9160□R	1/12.5	60	3∅440	50 60	135 135	0.25 0.23	4.4 3.7	0.431 0.363	61.10 51.38	1350 1600	13.5 9.7	1.323 0.951	187.47 134.70	-

* Model in grey screen represents the motors with THERMALLY PROTECTED according to UL regulation.

* Model in dark grey screen represents the motors with THERMALLY PROTECTED according to CE regulation.

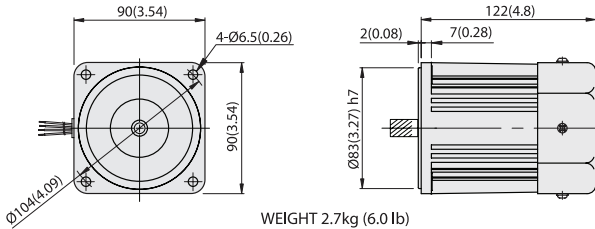
* In case of some models certificated for export, the special cord like CE or UL is added after the existing model no. ex) L9160□XH-CE, L9160□EH-UL.

* Insulation class for motors which acquired certificates for export is B.

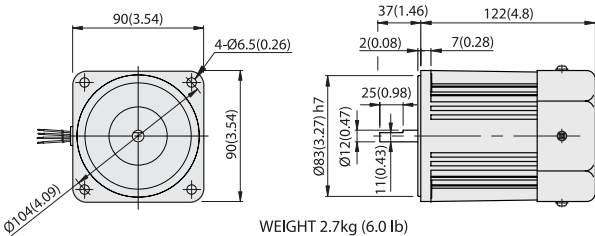
DIMENSIONS

L9160P□H

Unit : mm(inch)

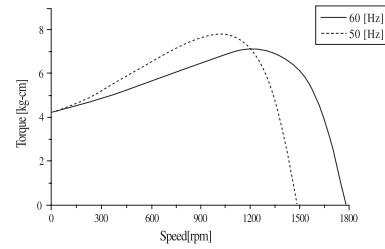


L9160D□

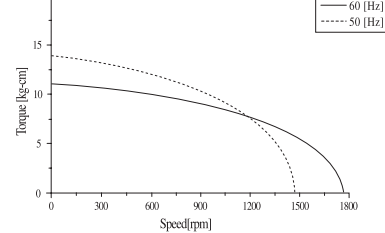


SPEED-TORQUE CURVE

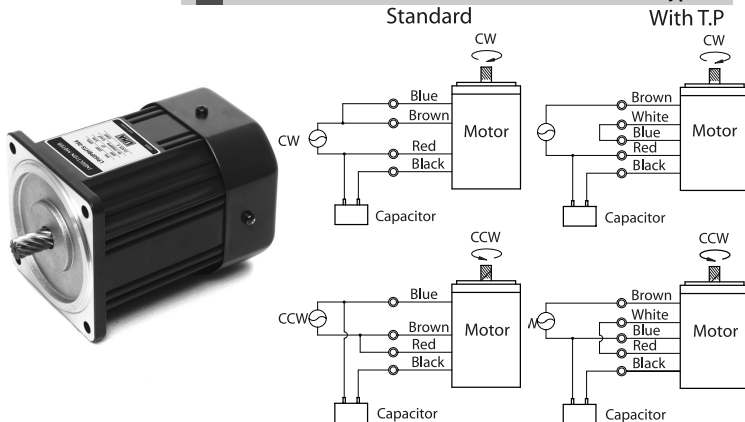
Single phase L9160□□



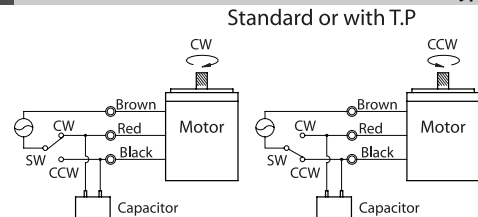
Three phase L9160□□



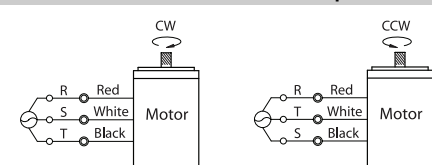
CONNECTION DIAGRAMS (4-lead wire type)



CONNECTION DIAGRAMS (3-lead wire type)



CONNECTION DIAGRAMS (3 phase)



The direction of rotation is seen from the end of motor shaft.